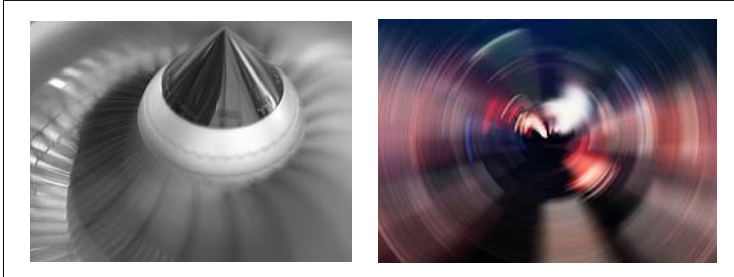


*New*



**CT 100 O - CT100 C**

**CE**



- HOLD /
- (contact) / (optical) r
- 
- 2

..... (optical) : 40cm

..... (contact) : ETC

..... 2 , LCD, 50 x 34.9mm  
 1 : 5 , 7 ( )  
 1 : 5 16 ( )

..... ABS, IP54  
 ..... 5  
 ..... r 450mm, 2.4m  
 ..... r (NF EN 61326-1 guideline)  
 ..... 1 9V 6LR61

..... 0 ~ 50  
 ..... -20 ~ +80  
 ..... 0 ~ 120 r  
 ..... 190g  
 ..... r ,

**CT 100 O -**



**CT 100 C -**

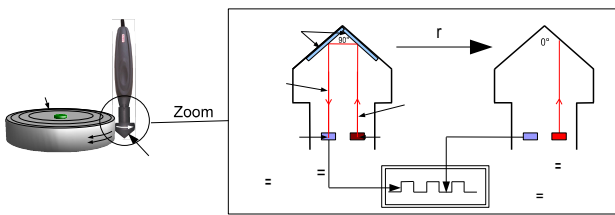


\*except class CT100S

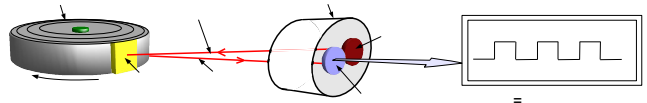
RPM			
RPM	60 ~ 10000 RPM 10001 ~ 60000 RPM	±0.3% of reading ±1RPM ±30 RPM	1 RPM
RPM			
RPM, m/min, ft/min, in/min and m/s	30 ~ 20000 RPMn	±1% of reading ±1 RPM	1 RPM

\*All accuracies indicated in this document were stated in laboratory conditions and can be guaranteed for measurements carried out in the same conditions, or carried out with required compensation.

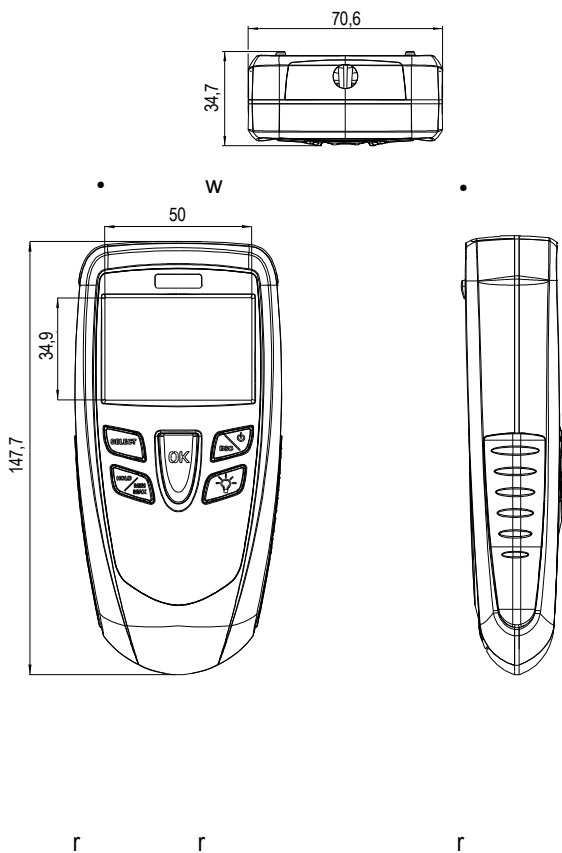
A light beam from a diode is reflected by a rotating mirror located inside the probe head. A light sensitive cell detects the frequency of the signal of the beam which is proportional to the rotation speed.



A light beam emitted from the diode the probe is reflected by a reflective tape placed on the rotating disk. A light sensitive cell detects the frequency of the signal of the beam which is proportional to the rotation speed.



(mm)



DESCRIPTION	CT 100 O	CT 100 C
17mm, $r$ 195mm	●	●
(ETC)	○	●
	●	●
*	●	●
$r$	●	●

\*except class CT100S

### Accessories (See related datasheet)

